

# ECOSC2Y2P

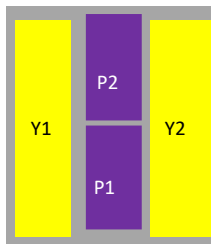


## Features & Applications

- Small Cell Pseudo Omni Canister Fixed Antenna
- 4-port x 1710-2690 MHz, 4-port x 3300-4200 MHz
- HPBW : 360 °
- Gain : 9.4 dBi, 9.2 dBi

ELECTRICAL SPECIFICATIONS						
Port Information	-	Y1-Y2				P1-P2
Frequency Range	(MHz)	1710-1850	1850-1910	1910-2180	2300-2690	3300-4200
Gain (Max)	(dBi)	9.4	9.1	9.3	9.4	9.2
Gain (Avg.)	(dBi)	8.9	8.8	8.8	9	8.5
Horizontal Pattern						
Azimuth Beam width	(°)	360				
Gain OMNI Deviation	(dB)	3.5	5	5	5	6
Vertical Pattern						
Elevation Beam width	(°)	16	16	15	14	15
First Upper Side Lobe Suppression	(dB)	11				8
GENERAL SPECIFICATIONS						
In-Band Cross Polar Port Isolation	(dB)	>20				
Inter-Band Port Isolation	(dB)	>25				
VSWR	-	1.5 : 1				
Polarization	-	±45°				
Intermodulation IM3	(dBc)	-153 (3rd Order, 2x20W)				-
Impedance	(Ω)	50				
Max. Effective Power per Port	(Watts)	100				

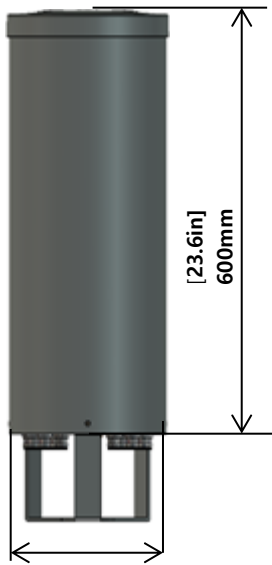
## Array Information



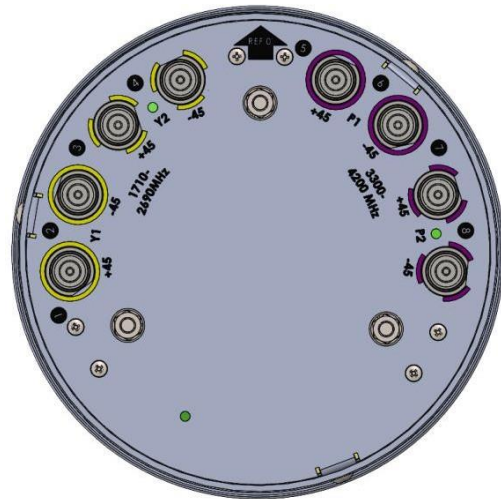
Up	Array	Frequency(MHz)	Connectors
	Y1-Y2	1710-2690	1-4
	P1-P2	3300-4200	5-8

# ECOSC2Y2P

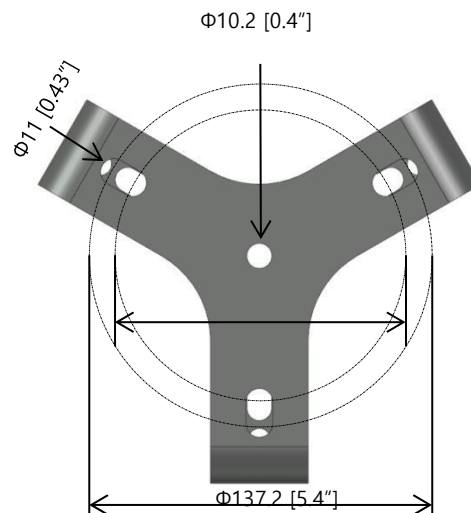
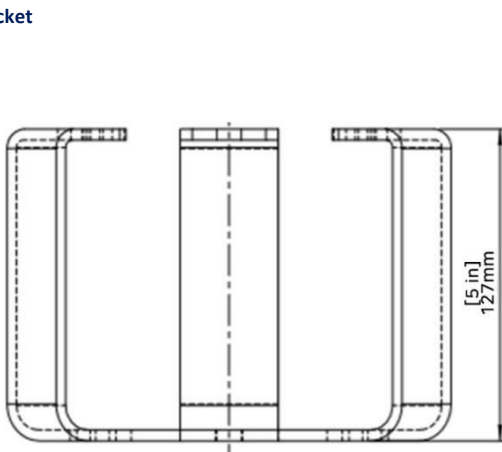
Outline



Bottom



Bracket

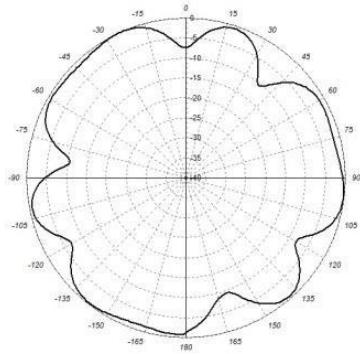


MECHANICAL SPECIFICATIONS

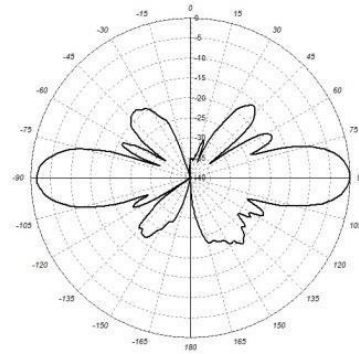
Connector Type & Quantity	-	8 x 4.3-10 Female
Connector Position	-	Bottom
Antenna Dimension (W x D)	(inch / mm)	∅ 9.4 x 23.6 / ∅ 240 x 600
Weight (without Mounting Kit)	(lb / kg)	22.15 / 10.05
Wind Load (@100 mph)	(N)	230
Max.Wind Speed (Survival Wind Speed)	(mph)	150
Radome (Color)	-	ASA (Gray)

# ECOSC2Y2P

Pattern File\_1710-2690 MHz

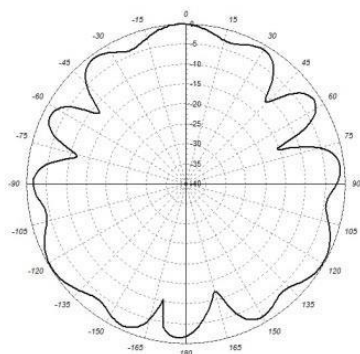


Horizontal

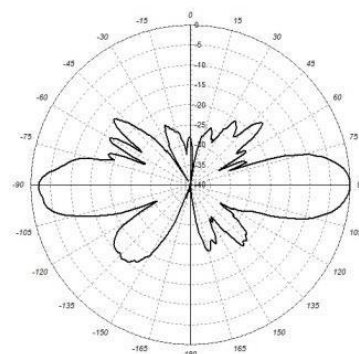


Vertical

Pattern File\_3300-4200 MHz



Horizontal



Vertical