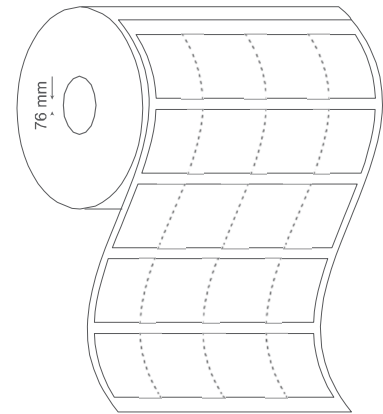


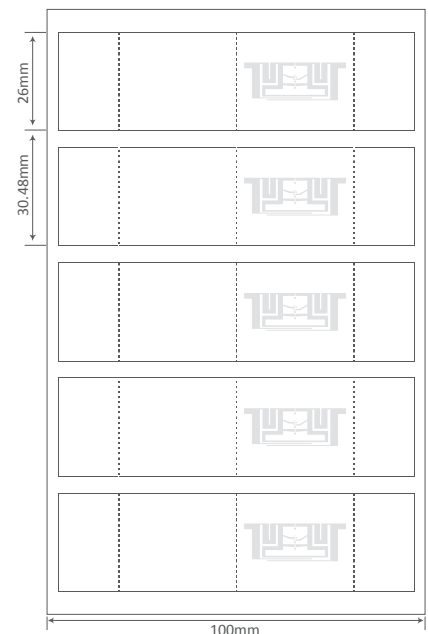
ESB AerialM-T is a high performance UHF RFID tag for both metallic and non-metallic surfaces. The tag extends upright above the surface to prevent any transmission interference caused by the surface underneath and can read up to 3.5 meters away using UHF reader antennas. It is delivered in a reel format and can be encoded and printed with typical RFID printers that are capable of printing labels.

TYPICAL APPLICATIONS

- Retail & item level tagging
- Tagging retail merchandise containing liquid.



PHYSICAL SPECIFICATION	
Face Stock	Printable white PET, resin ribbon is recommended
Label Sizes	94 x 26 x 0.2 mm 3.70 x 1.02 x 0.01 in
Adhesive	High performance permanent adhesive with excellent bonding to a variety of substrates
Weight	0.75 gms
Delivery format	On reel
No. of Labels/ Reel	std: 2000 pcs mini: 500 pcs
Label Pitch	30.48 mm / 1.2 in
Core inner diameter	76 mm / 3 in



RF SPECIFICATION

Mode of Operation	Passive
Device type	Class 1 Gen 2 Passive UHF RFID transponder
Air interface protocol	EPC Global Class 1 Gen 2 ISO 18000-6C
Operational frequency	Global 860-960 MHz
IC type*	UCode 8
Memory configuration	EPC Size 96 - 128 Bits
Data Retention	Upto 50 years
Write Cycle Endurance	100,000
Read Range (2W ERP)**	upto 3.5 m / 11.48 ft
Applicable surface materials	Metallic and Non-metallic surfaces

ENVIRONMENTAL RESISTANCE

Operating temperature	-40°C to +85°C / -40°F to +185°F
Withstands Exposure to	95% humidity, 60°C × 100 h, 50% humidity, 80°C × 100 h
Peak Temperature	+100°C for 1 hr, +80°C for 100 hrs
Recommended Application Temperature	+10°C to +38°C / 50°F to +100.4°F
Adhesive Service Temperature	-20°C to +85°C / -4°F to +185°F
Water Resistance	IP67
Chemical Resistance	No physical or performance changes in: - 168 h Salt water (salinity 10%) exposure - 168 h Motor oil exposure - 12 h NaOH (10%) exposure - 30 min Acetone exposure
Ideal Storage condition	+23°C / 50% RH
Expected lifetime	Years in normal operating conditions

PRODUCT INSTALLATION



- Ensure the application surface is not uneven and is clean and dry, to obtain maximum bond strength. If required, use approved cleaning solvents to clean surface.
- The label is affixed to the surface firmly with the tag extending upright above the surface to prevent any transmission interference caused by the surface underneath.
- Avoid touching the exposed adhesive area of the tag while mounting it

PERSONALIZATION OPTIONS

Pre-encoding

- Customer specific encoding of EPC

Customized Printing

- Customer specific layout including logo, text, numbers, barcodes etc.

ORDER INFORMATION

Part Number

- 42010566 RF.Li.TT.AerialM-T

Roll Sizes

- std: 2000 Labels per Roll / 4 Rolls per Carton
- mini: 500 Labels per Roll



Version : 300620.01