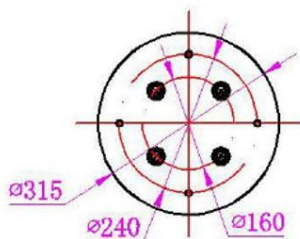
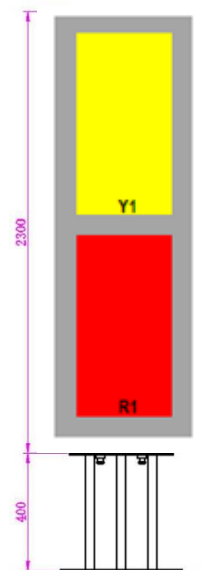
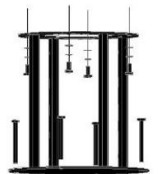
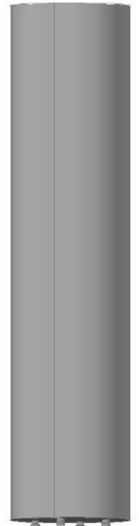


80112014

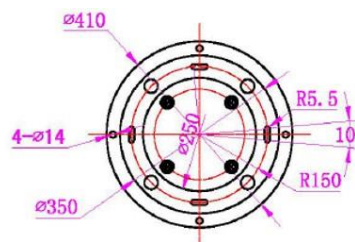
X-Pol Quasi-Omni
698-960 / 1710-2690 8/12dBi

Quasi-Omni Antenna
 XX-Pol 4-port 8/12dBi
 698-960 / 1710-2690

Type	80112014	
Frequency Range (MHz)	698-960	1710-2690
Gain (dBi)	8	12
VSWR	≤ 1.7	
3rd Order PIM (dBc)	≤ -150 @ 2x43dBm	
Polarization	±45°	
Isolation (dB)	≥ 18	≥ 18
Horizontal Beamwidth (°)	360	
Vertical Beamwidth (°)	12	7
Input Impedance (ohm)	50	
Max. Input Power (W)	250	
Lightning Protection	DC Grounded	
Connector Type	2 x 4.3-10 Female	2 x 4.3-10 Female
Dimension (mm)	Ø315 x 2,300	
Weight (kgs)	15	
Radome Material	Fiber Glass	
Reflector Material	Aluminum	
Operating Temperature (°C)	-40 to +65	
Max. Wind Velocity (km/h)	200	
Mounting	Floor Mount with Steel Stand (Supplied)	



Bottom View - Antenna



Bottom View - Stand